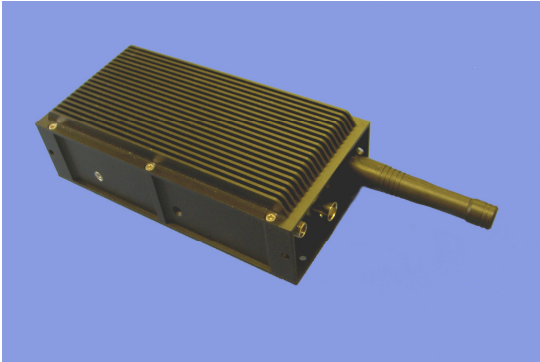


Navtech Systems Video Links

Rover Transmitter Systems



1 Watt Transmitter



100 mW Transmitter

The Rover COFDM transmitters' modules provide for a very robust digital video link. By using the latest technology for compression and modulation this ensures for very efficient and non-line of sight propagation. A wide band of frequencies are available with options of 100 mW and 1 watt RF output power. Higher power options are available. A choice of modulation themes and antennas accommodates many mobile and fixed applications.

The matching Rover Receivers offers a choice for all mobile and fixed video linking applications.

Technical Details

Transmitter:

RF Output : 100mW or 1W
Power : 12 VDC (9-36 optional)
Current : 100mW < 600mA, 1W <1.0A
RF o/p : SMA
Dimensions : 165 mm x 80mm x 50 mm (1 Watt)
: 140 mm x 62mm x 35 mm (100mW)
Weight : 0.70kg (1 Watt), 0.45 kg (100mW)
Video input : Composite via BNC

Frequencies:

L Band : 1.15 - 1.4 GHz
S Band : 2.28 - 2.485 GHz
C Band : 5.725 - 5.850 GHz
Others by request
Bandwidth : Standard 8 MHz
: Narrow 2 MHz
: Ultra narrow 1 MHz
Compression : JPEG2000 - MPEG4 -H264
Modulation : QPSK or 16-QAM

Standard Features Available:-

Compression : JPEG200 & H264
SDI Video : PAL& NTSC
Audio 2 channel : H264 only
Channels : 16 (8xQPSK, 8x16QAM)
Modulation Type : QPSK or 16 QAM
Bandwidth : 8 MHz, 2 MHz & 1Mhz @ QPSK; 8 MHz & 4MHz @ 16QAM
Antenna : SMA
Power Connection : Lemo (2 pin)



Navtech Systems Limited

Sulby, Nr. Welford, Northamptonshire. NN6 6EZ. UK.

Telephone: +44 (0)1858 880 857 Fax: +44 (0)1858 880 859

E-mail: sales@navtechsystems.co.uk

Web: www.navtechsystems.co.uk